



RAFFLES
DUBAI
رافلز دبي

**Leisure Traveller
Fact Sheet**



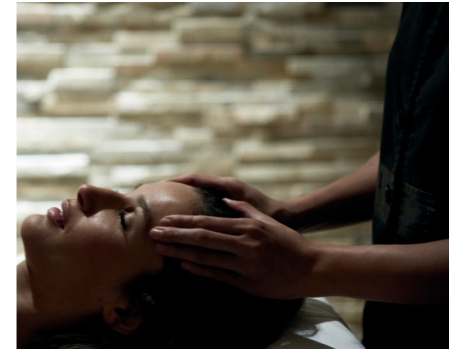
Your Residence - Your Raffles

Much more than a hotel

The perfect residential sanctuary to unwind in Dubai.

Conveniently located 10 minutes from Dubai International Airport and conveniently located near Dubai Cruise Terminal. Just a few blocks away from the Shopping, Entertainment and Cultural districts.

Raffles Dubai, surrounded by private gardens and situated in the heart of the city, is the perfect place offering the most modern amenities with gracious service.



In Residence at Raffles

252 palatial guestrooms and suites featuring exotic architectural influences that include balconies, natural daylight and elegant contemporary designs.

- 120 Signature Rooms (70sqm)
- 73 Raffles Club Rooms (70sqm)
- 24 Diplomatic Suites (150sqm)
- 24 Landmark Suites (205sqm)
- 1 Deluxe Landmark Suite (294sqm)
- 1 Executive Landmark Suite (375sqm)
- 4 Presidential Suites (301sqm)
- 1 Ambassador Suite (444sqm)
- 2 Penthouses (441sqm)
- 2 Royal Suites (650sqm)

Wine & Dine

Seven restaurants and bars offering a tantalising spread of international cuisines, alongside a host of dining options at WAFI.

- Raffles Salon
- Crossroads Cocktail Bar
- Azur
- Fire & Ice Grill
- TOMO, Authentic Japanese
- Pool Restaurant & Bar
- People by Crystal

Rest & Relax

Exciting activities and pampering treats for ultimate relaxation.

- Raffles Spa offers 5 treatment rooms and two couples therapy rooms
- Outdoor Swimming Pool and jacuzzi
- Fitness Centre
- Sauna and steam rooms
- Raffles Botanical Garden
- Raffles Boutique
- Access to WAFI shopping mall, Khan Murjan Souk - an Arabic market, family entertainment with Encounter Zone for kids, Wafi light and sound show and a host of cafes and restaurants
- 15 minutes away from the largest beaches

Things to do in Dubai

- Bateaux Dubai dinner cruise along the Dubai Creek
- Water sports
- Dubai Dolphinarium
- Dhow Cruise and Desert Safaris
- The Spice & Gold Souk
- Ski Dubai
- Helicopter Tours and Balloon Flight
- Wild Wadi and Aqua Venture Water Park
- Big Bus Company and Exclusive City Tours
- Dubai Museums, Bastakiya and Jumeirah Mosque
- At The Top - Burj Khalifa
- Dubai Creek Golf Course
- Dubai Mall with Kidzania, Sega World, ice rink, the Aquarium and underwater zoo.

Getting to Raffles Dubai

- Located in Dubai Healthcare City
- 10 minutes from Dubai International Airport
- 10 minutes from Dubai International Financial Centre and Dubai World Trade Exhibition / Convention Centre / major entertainment, shopping and financial district



RAFFLES DUBAI

Sheikh Rashid Road, Wafi, P.O.Box 121800 Dubai, United Arab Emirates

T +971 4324 8888 F +971 4324 6000 dubai@raffles.com

www.raffles.com/dubai